


KOENIG & BAUER

Coding & Camera



we're on it.



Product marking e.g. with
continuous inkjet printer
alphaJET

Check of the product
marking e.g. with
VeriSens® camera

100 % safety

Make sure that every print
is checked for presence,
readability and content

reduce expenses

Getting started is possible
with a cost-effective
turnkey solution - act now



smart & easy

Replace existing complex
checking procedures by
a simple and automatic
solution.

support

For us, coding & reading
belong together - take
advantage of the experience
from a single source

**Safety in all industries -
on the most different materials**



Check a date for correctness



Presence check of marking on reflective can



Check barcode content



Evaluation of QR-Codes / DataMatrix-Codes on folding boxes



Testing of batches / lot numbers on drugstore and cosmetic products



Reading and checking texts and codes marked on transparent surfaces



Reading texts and codes from curved, uneven surfaces



Quality monitoring on smallest electronic parts

Integration



The classic - flexible linking to a wide variety of conveyor lines.



Easy integration, even into flexible lines e.g. linear guides.



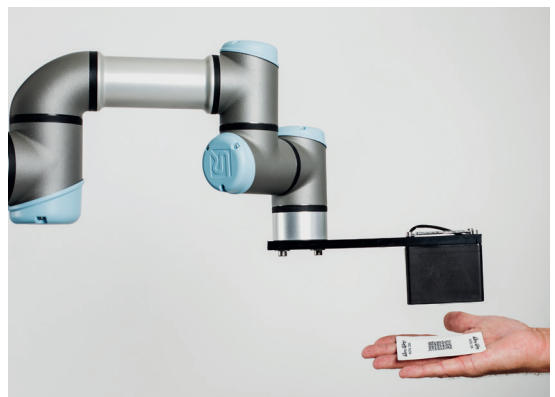
Combinable with existing systems such as label dispensers.



Limited mounting space, unusual installation position - we still make it possible.



Print and check in a rotary movement - the register adjustment detects position and rotary angle of the product.



Be prepared for new fields of application.

Speed

| | Print mode | Pixel height | Print optimization | Print length mm | Distance printhead-product mm | Print size mm | recomm. line speed max. m/min | min. distance print to print mm | camera processing time us | camera prozess time ms |
|------------------|------------|--------------|--------------------|-----------------|-------------------------------|---------------|-------------------------------|---------------------------------|---------------------------|------------------------|
| Reference Inkjet | | px | | mm | mm | mm | m/min | mm | us | ms |
| 1-line 1 object | Pm15 | 7 | fast | 27 | 5 | 3 x 27 | 140 | 150 | 130 | 55 |
| 1-line 2 objects | Pm15 | 7 | fast | 45 | 5 | 3 x 47 | 140 | 200 | 130 | 75 |
| 2-line 2 objects | Pm24 | 17 | fast | 20 | 10 | 7 x 23 | 90 | 130 | 130 | 75 |
| 3-line 3 objects | PM32 | 27 | fast | 31 | 20 | 9,5 x 31 | 30 | 60 | 130 | 110 |
| DMC 10x10 | PM15 | 10 | fast | 4 | 8 | 4,5 x 4,5 | 50 | 50 | 130 | 50 |
| DMC 8x32 | PM15 | 8 | fast | 13 | 8 | 3,5 x 13 | 75 | 90 | 130 | 60 |
| DMC 26x26 | PM32 | 26 | fast | 11 | 20 | 11 x 11 | 25 | 110 | 130 | 250 |
| QR-Code 25x25 | PM32 | 25 | fast | 11 | 20 | 10 x 10 | 25 | 110 | 200 | 250 |

Scope of delivery



VeriSens® XF

Standard scope of delivery:

- VeriSens® Camera: Allrounder XF or Special XC
- connection box
- camera add-on in the printer
- power supply unit
- data connection cable



polarizing- & colour filters

Accessories, optional available:

- standard mounting
- tripod
- mounting bracket
- polarizing & colour filters
- lenses & dust protection
- lightning & safety housing
- special accessories on request

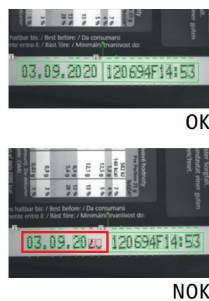
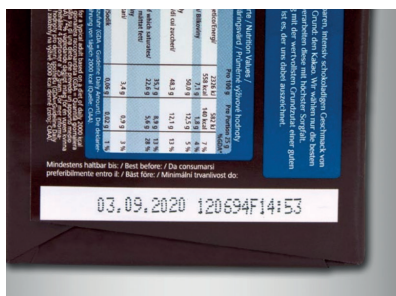


100 % visual check for all industries

Marking and coding of products is carried out with individual specifications with various details. Despite high personell input, manual spot checks do not provide absolute security.

The combination of compatible components for industrial coding and image-based quality inspection provides you with a reliable and pixel-precise control in real time.

Numerous feature checks are available for checking the coding in real time.



Check for presence

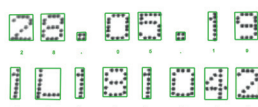
OK = coding completely present

NOK = coding incomplete,
product is discharged



Several checks at the same time

e.g. data matrix code and
alphanumeric text



Matching of data

Check whether the printed text or the
content of the printed code matches the
expected data.

print & check at a glance

General technical data:

| | Camera XF | Camera XC |
|---------------------------|--------------------------------|---|
| Resolution | • 752 x 480 px | • 640 x 480 px |
| Lightning | • integrated, LED white | • No, external lightning required |
| Object distance | • min. 50 mm / max. 450 mm | • depending on objective |
| Number of jobs (products) | • ≤ 255 | • ≤ 255 |
| Features per job | • 32 | • 32 |
| Objective/lens | • 12 mm | • changeable objective C-Mount e.g. 12 mm |
| Operating voltage range | • 18 ... 30 V | • 18 ... 30 V |
| Power consumption | • Typ. 5W (Imax = 1 A at 24 V) | • Typ. 8W (Imax = 1 A at 24 V) • Typ. 14W (Imax = 1,5 A at 24 V) |
| Process interface | • TCP I UDP (Ethernet) | • TCP I UDP (Ethernet) |
| Visualization | • Web-Interface | • Web-Interface |
| Dimensions | • 53 x 99,5 x 38 mm | • 53 x 99,5 x 49,8 mm |
| Weight | • ≤ 250 g | • ≤ 300 g |
| Operating temperature | • +5 ... + 50°C | • +5 ... + 50°C |
| Protection class | • IP 67 | • IP 67 |

| CONTACT | ANALYSIS | CONCEPT | RESULT |
|---|--|---|--|
| Your non-committal inquiry by email or by telephone is the first step. Please contact us. | Our experts will work with you to clarify your current situation and identify your demands | According to your demands we will make you an attractive offer and, if you wish, carry out a test run in your production. | If you agree with that concept, we will realise your order and support you throughout the entire implementation process. |

Please also visit our website: coding.koenig-bauer.com

Koenig & Bauer Coding GmbH

Benzstraße 11
97209 Veitshöchheim, Germany

T +49 931 9085-0

F +49 931 9085-100

info-coding@koenig-bauer.com

coding.koenig-bauer.com

Text excerpts and illustrations may only be used with the permission of Koenig & Bauer Coding GmbH. Illustrations may show special equipment which is not included in the basic price of the systems. The manufacturer reserves the right to make technical and design changes.



07/2020-en 1040.7056
Printed in Germany