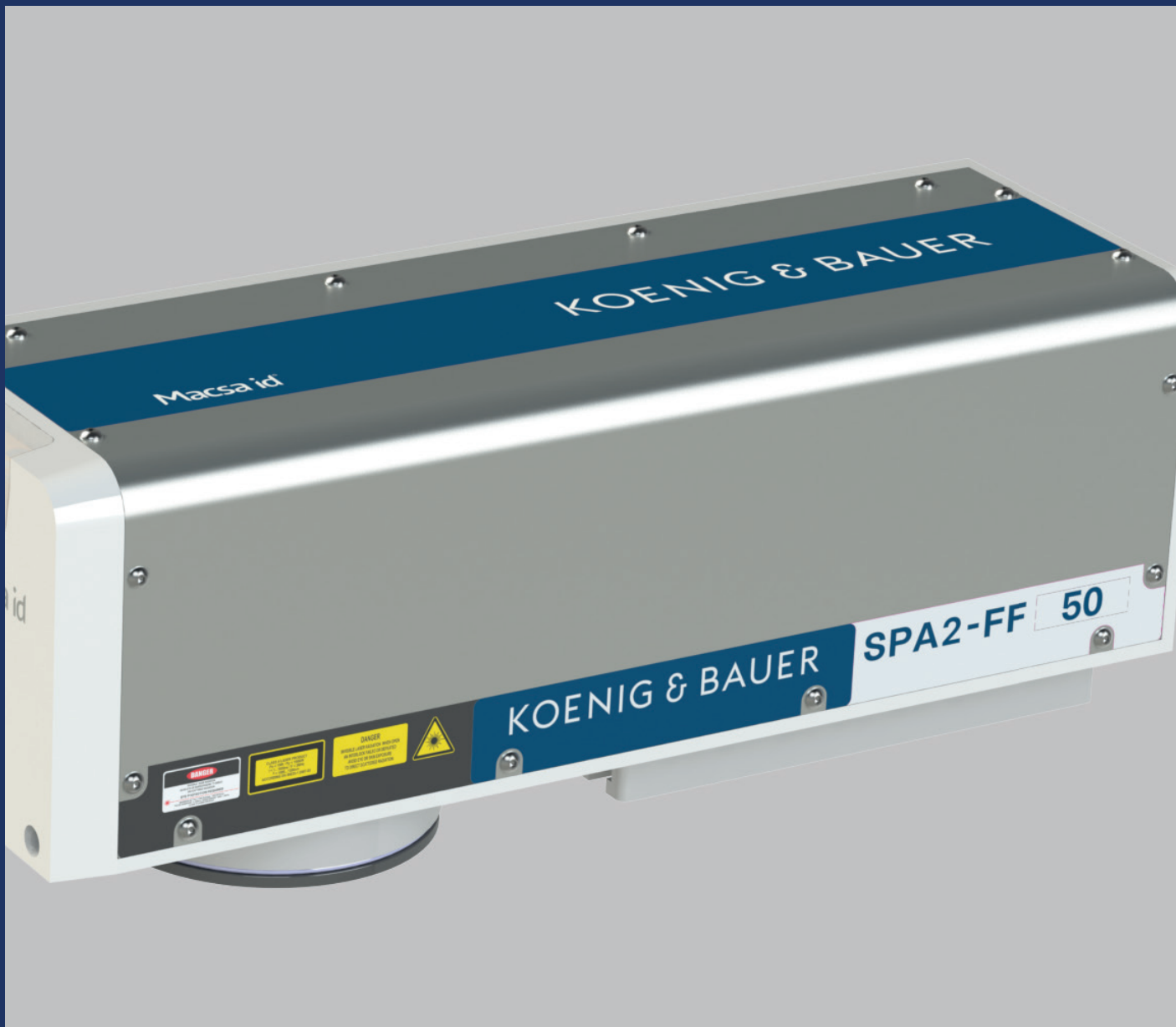


KOENIG & BAUER

# Laser systems



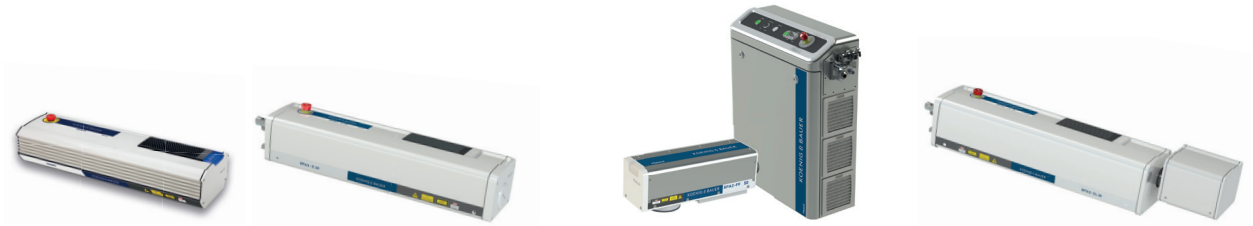
we're on it.

EN

# Laser

Laser coding is ideal for permanent marking that is absolutely smudge-proof and abrasion resistant during the production process. Lasers are versatile, low-maintenance, and absolutely reliable in automated environments.

Coding lasers offer not only precise markings for product identification and decoration, but also excellent reliability and cost savings in your everyday production. The Koenig & Bauer Coding portfolio offers models to meet your needs in every application to fulfil individual printing requirements.



	Entry	Advanced			High-End	
	iCON 3	SPA2 C	SPA2 FP / FF	SPA2 DN	SPA2 HPD	SPA2 DG
Version <sup>1</sup>		SE, DE	SE, DE	SE, DE	SE	SE
Technology	CO <sub>2</sub>	CO <sub>2</sub>	Fibre	YAG	CO <sub>2</sub>	Green
Performance W	10	10 / 30 / 80	20 / 50 / 100	6 / 20	30 / 80 / 100	1,5 / 4 / 5
Wavelength	10,6 µm	10,6 µm	1064 nm	1064 nm	10,6 µm	532 nm
Scanner <sup>2</sup>		XQS	XQS, UHS	UHS	HPD	
Beam path	90°	90° / 0°	90°	90°	90° / 0°	90°
<b>Option:</b>						
- Marca Full Graphic	✓	✓	✓	✓	✓	✓
- Profinet	✓	✓	✓	✓	✓	✓
- Touch screen	✓	✓	✓	✓	✓	✓
- Pilotlaser		✓	✓	✓	✓	✓
- Protection class	IP20	IP31 / IP 54	IP31 / IP 54	IP 22	IP 31	IP 31
Speed * m/min.	75	250	660	250	250	250

\*max. 1-line, Coding speed may vary depending on size, content, and materials.

Version<sup>1</sup> SE=Standard Environment DE= Dusty Environment

Scanner<sup>2</sup> XQS=Xtreme Quality and Speed UHS=Ultra High Speed HPD=High Power Density

Supplement your laser with practical **accessories** such as an extraction unit, hand-held scanner, sensors and camera, and with a **software solution** that supports you. You are already using the label software NiceLabel? If so, you can continue to create your print label with NiceLabel, because our lasers also support this printer driver.

### The material and laser technology used determine the how laser coding functions.

When the targeted laser beam hits the material, it creates a reaction called laser coding or laser marking. This reaction differs depending on the material used.

- Targeted **removal of colour**, typically from printed or coated materials.
- **Colour change**: material or admixed pigments react in a controlled manner to the beam, e.g. light to dark or dark to light.
- **Engraving**: laser removes material from the workpiece. This can be seen and felt.
- If a steel surface is heated in a localised area with a laser beam, the **annealing colour** results after cooling.
- During **foaming**, plastic is melted in a defined way by the laser beam.
- **Cutting / scoring / perforating** with precision, e.g. for vouchers and sachets, diffusion perforation of plastic film.

Key advantages Laser

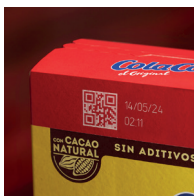
- Lasers are low maintenance and require no consumables - this saves time and money and protects the environment.
- Ultra-High-Speed (UHS) print heads enable sophisticated marking even at the highest speeds.
- Open interfaces facilitate customer-specific connectivity.
- Compact design and selectable beam path enable integration even in limited spaces.



More information:

<https://coding.koenig-bauer.com/en/products/laser-systems/>

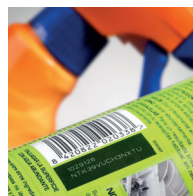
Print samples Laser



food



beverages



household



cosmetics



pharmaceuticals



foil / films



glass



paper



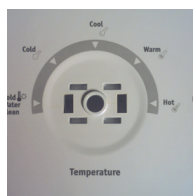
plastic



wood / cork



automotive



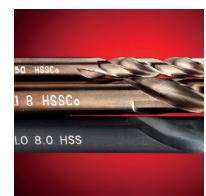
electronic



cable



components



tools



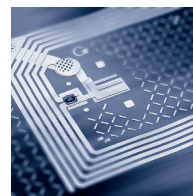
metal



pipe



fruit / veg



board



additive / silicones

Product coding must be adaptable to the requirements of your production line. We support you with standardised and individually planned application solutions. Whether a stand with a safety enclosure, a marking station with a conveyor belt or a freely planned application.

# Tailor-made services

Good coding is a quality feature for production reliability - from logistics to the end consumer. It is important to maintain this at a consistently high level. We support you and your team with our customised services.

- Safeguarding your production by minimising operator errors and reacting quickly on your own.
- Maintaining excellent print quality through optimal operation on and in the system.
- Reduction of downtimes and the associated costs.



## Training

Operation, service and maintenance.

Especially in a running production, a quick reaction is required in case of emergency. Well-trained employees know the tricks and tips!

We pass on our know-how in-house, at your site or in an online training course:

- correct handling
- self-reliant maintenance
- independent troubleshooting



## Service and maintenance

You dedicate yourself to your core business, we ensure the availability of your coding device.

An unexpected production stoppage always has negative consequences. In addition to the sudden loss of production, there is also the stress on the line. By choosing our service plans, we will automatically remind you when maintenance is due. Regular servicing

- keeps your print image perfect
- maximises the life of your coding and marking system
- minimises the cost of unscheduled service calls

In brief: you can prevent printer breakdowns, avoid repairs and save money.



## Project planning and customised application

From analysis to implementation.

Our competent engineers support you with comprehensive and long-standing expertise - also in special machine construction. Individual integration into your existing production lines is handled by our applications department with direct access to our in-house CNC machinery.

Your advantages are obvious:

- full-range supplier for industrial coding and marking
- contact partner for your individual project
- comprehensive partner network



**Managed Services**

Up-to-date and forward-looking.

Managed Services is an optional virtual assistant that keeps a permanent and seamless eye on the alphaJET systems and all their functions and provides live, real-time information via a dashboard. This increases performance and makes your production even safer.

- display of consumables, equipment performance and availability
- fast and qualified support via remote access
- reduction of unplanned costs due to unexpected production downtime



**Consumables and spare parts**

Standardised or individual.

The large portfolio of consumables for all technologies, including new in-house developments, and the close technical coordination between our development departments for equipment and consumables, leads to continuous use in production:

- optimum running properties
- broad and constantly growing portfolio, tailor-made to customer requirements
- high quality and reduced consumption



**Framework contracts and call-off orders**

Clever purchasing strategies save time and money.

By concluding blanket and call-off orders, you show supply bottlenecks and price fluctuations the red card. Benefit from:

- short delivery routes
- stable and plannable conditions
- outsourced warehousing



**Rental concepts**

An attractive alternative to buying. The principle: rights of use instead of ownership.

Reduce the capital investment for your assets. You can rent our marking and coding devices very easily and cost-effectively. This does not tie up your capital and does not require depreciation.

- You invest and yet remain liquid.
- You are flexibly moving with the times and always use modern, high-performance equipment.
- You set the rate individually to your requirements with transparent costs.

**Koenig&Bauer Coding GmbH**  
Benzstraße 11  
97209 Veitshöchheim, Germany

T +49 931 9085-0  
F +49 931 9085-100  
info-coding@koenig-bauer.com

coding.koenig-bauer.com

### Contact

Your non-committal inquiry by email or by telephone is the first step. Please contact us.



### Analysis

Our experts will work with you to clarify your current situation and identify your demands.



### Concept

According to your demands we will make you an attractive offer and, if you wish, carry out a test run in your production.



### Result

If you agree with that concept, we will realise your order and support you throughout the entire implementation process.

Text excerpts and illustrations may only be used with the permission of Koenig & Bauer Coding GmbH. Illustrations may show special equipment which is not included in the basic price of the systems. The manufacturer reserves the right to make technical and design changes.

