

labelIDOT

**hpdSYSTEM** moto



- ✓ MARKING OF TIRES
- ✓ COLORFUL DOT, 6 - 20 MM Ø
- ✓ HIGHEST ABRASION AND SCRATCH RESISTANCE



*Simple. Runs. Colorful.*

*heat activated and heat deformable transfer-labels LTA*

INKJET Thermal Transfer Overprint

**HOTFOIL-CODING** *LASER Thermal-Inkjet Offline coding*

For use-by-dates **AFTER SALES** *BARCODE etc.*

**CODING SYSTEMS**

*„MADE IN GERMANY“*

**labelDOT are heat activated and heat deformable transfer-labels, LTA.**  
**They are used for marking tires made of vulcanized rubber.**

## Design and Dimension

labelDOT is a brilliant colour dot, diameter 6 - 20 mm.  
 Different individual print layouts are possible.

## Colours

Based on a 12 colour mixing system, a wide range of individual colours are available.

labelDOT are free from toxic substances and in accordance with the following standards:

- DIN EN 71-3 „Safety of Toys - Part 3: Migration of certain substances“ and
- Öko-Tex Standard 100, product class I.

Standard colours are white, red, yellow and green.



- Tesa test: Product not removable.
- Label can be removed only by complete destruction.
- FINAT-testing method Nr. 21
- Tesa duct tape „Tesapack strong“
- 3M duct tape „8901“

## ATTENTION! Application Test

Due to the variety of the materials used in the tire manufacturing process (rubber compounds and mold release agents), a test application on the original material and functional testing under realistic conditions is strongly recommended.

## Delivery Form

- Reel on 1 inch core, wall thickness sleeve: 3mm
- Reel width 20 mm and 25 mm
- Reel diameter max. 100 mm at 2,500 dots / Reel

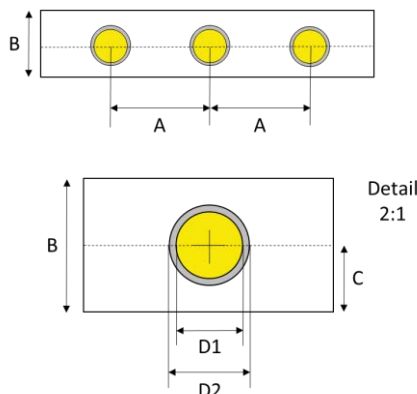
Individual widths, formats, diameters and graphical adjustments available on request



## Dimensions

drawing dimensions	20 mm (mm)	25 mm (mm)	tolerance (mm)	description
A	30,0	30,0	± 0,7	partition
B	20,0	25,0	± 0,5	roll width
C	10,0	12,5	± 0,4	edge distance
D1	6,0 to 15,0	6,0 to 20,0	-0; +0,6 *	coloured dot
D2	D1 + 1,6	D1 + 1,6	± 0,3	adhesive

\*Due to the printing process used an undershooting of the nominal dimension D1 is technically impossible.



Subject to technical and design changes E&OE

## Target material surface

vulcanized natural or synthetical rubber, vehicle tires.

## Material surface -shape

Smooth, rough or textured surfaces.  
 Raised structures up to 1 mm can be accommodated.

## Material surface -cleanliness

low pollution, residues of mold release agents can be accommodated.

## Labels application

Automatic or manual thermal transfer press.  
 Stamp temperature: 110 ° C to 150 ° C,  
 duration: 0.5 - 2 sec.  
 Pressure: 10-20 N / cm<sup>2</sup>,  
 line pressure: machine-dependent.  
 Sample applications under application-oriented conditions are recommended.  
 without **protective backing paper**

## Label carrier

transparent PET film; thickness: 36 or 50 microns.

## Cure time

labelDOT are immediately functional after application.  
 The final adhesive strength is achieved after 24 hours.

## adhesion

labelDOT adhere permanently and adopt the surface contour.

## gloss

Glossy to satin, surface material and structure dependent.

## elasticity

Flexible as base material.

## removability

labelDOT adhere permanently and can be removed only by complete destruction.

## Applications

Identification of unbalance, 1<sup>st</sup> Harmonic and for internal production purposes on vehicle tires.

## Storage and Durability

Shelf life at least 2 years in the original carton in closed rooms under normal climatic conditions:

- Ambient temperature between 10°C and 30°C (50°F – 86°F).
- Humidity between 30% and 65%rel.

Storage under exposure to direct sunlight should be avoided.

After exceeding the shelf life product function should be rechecked on the original material